

Assembled UniSlide XY Tables

AXY40 and AXY60 Series

Although any two UniSlide Assemblies in combination offer a very wide variety of XY possibilities, we also have these assembled XY tables to meet common applications. These tables feature a large top work surface

combined with a stable base, and can provide load handling from 25 to 100 pounds. Tables are designed with crossed and inverted (slider down) A40 or A60 UniSlides and XY plates. Overall height is 3 3/4" on the AXY40, and 5 1/2" on the AXY60. The standard lead screw is the W1 with a lead of 0.100" /revolution.

Available Options

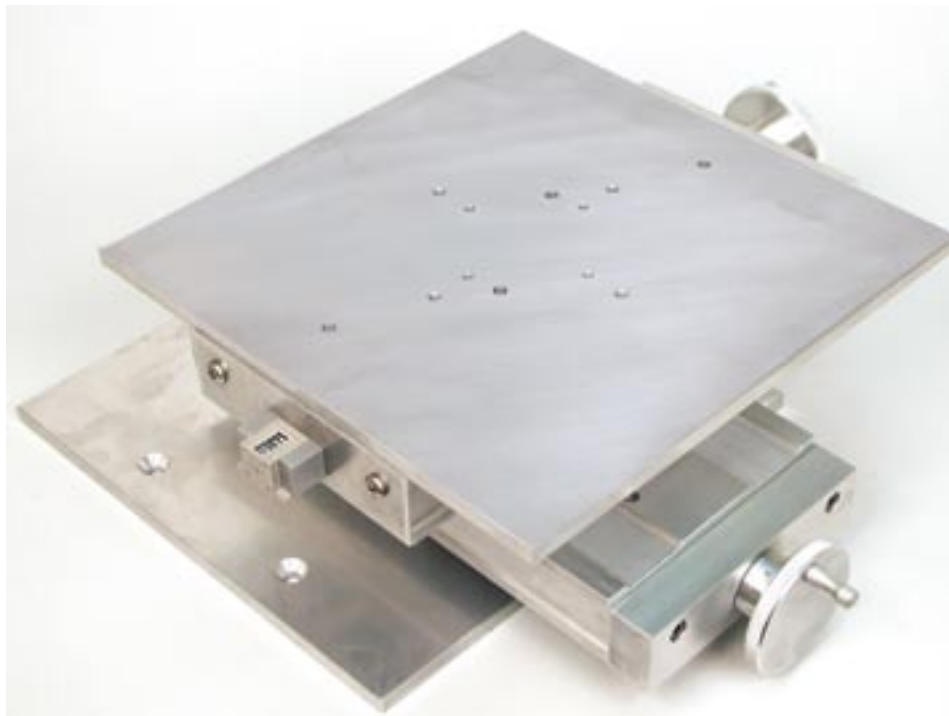
B (0.050"/rev), C (0.025"/rev) or K1 (1 mm/rev) lead screws can be substituted for the standard W1. A Graduated Knob 0.001" resolution and/or revolution counter providing 0.01" resolution are also available. Refer to the Options pages for additional information on rev counters.



Model AXY4009W1 — 5" x 5" travel. A 2" x 2" travel model is also available.

Model Number	Travel
AXY4006W1	2" x 2"
AXY4009W1	5" x 5"

Model Number	Travel
AXY6009W1	3" x 3"
AXY6012W1	6" x 6"
AXY6015W1	9" x 9"



Model AXY6012W1 — 6" x 6" travel with optional revolution counters. Models with 3" and 9" travels are also available.

Keyword: axy

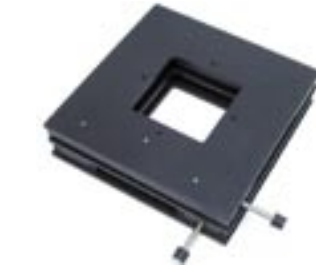
AXY25 Series

These low profile tables feature a height of just 2 3/8" and provide exceptional rigidity and a large work surface area. They are designed around four A25



Models AXY2506W1 and AXY2509W1

Series UniSlide Assemblies. The standard lead screw is the W1 or 0.100" per revolution. All models have a 25 pound load capacity.



Model AXY25 with optional window

Available Options

B (0.050"/rev), C (0.025"/rev) and K1 lead screws can be substituted for the standard W1. Black Anodizing (-BK).

Model Number	Travel
AXY2506W1	2" x 2"
AXY2509W1	3" x 3"
AXY2512W1	4" x 4"

Model Number	Travel	Height (H)	Load	Work Envelope
AXY2506W1	2" X 2"	2.40"	25 lbs.	13" x 13"
AXY2509W1	3" X 3"	2.40"	25 lbs.	18" x 18"
AXY2512W1	4" X 4"	2.40"	25 lbs.	23.38" x 23.38"
AXY4006W1	2" X 2"	3.78"	60 lbs.	12.53" x 12.53"
AXY4009W1	5" X 5"	3.78"	25 lbs.	18.53" x 18.53"
AXY6009W1	3" X 3"	5.50"	100 lbs.	17.03" x 17.03"
AXY6012W1	6" X 6"	5.50"	60 lbs.	23.03" x 23.03"
AXY6015W1	9" X 9"	5.50"	30 lbs.	29.03" x 29.03"

Note: Throughout this catalog you'll see **Keywords in a RED rectangle**. Clicking the word takes you the relevant page on our website. There you can get more information, including access to drawings, specs, prices, photos of examples and our latest innovations.

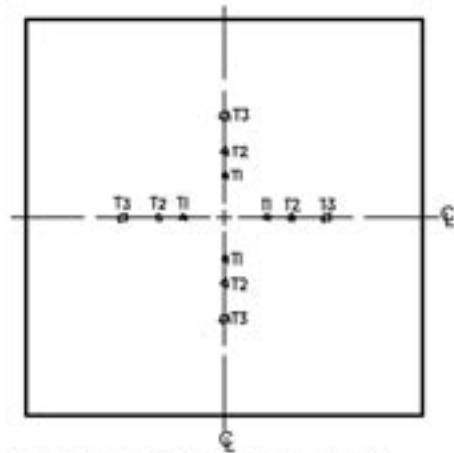
AXY Table Plates

T1- 8-32 ON A 2.062 DIA BOLT CIRCLE
ACCEPTS A25 ADAPTERS & A2505TS TURNABLES

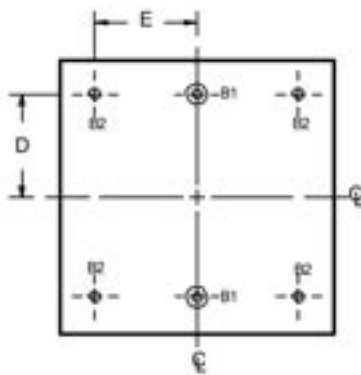
T2- 10-32 ON A 3.250 DIA BOLT CIRCLE
ACCEPTS A40 ADAPTERS, A4005TS, AND *A4800 ROTARY TABLES

T3- 14-20 ON A 5.000 DIA BOLT CIRCLE
ACCEPTS A60 ADAPTERS AND *A4800 ROTARY TABLE

*A4800TX ADAPTER-PLATE USED TO MOUNT
A4800 ROTARY TABLE



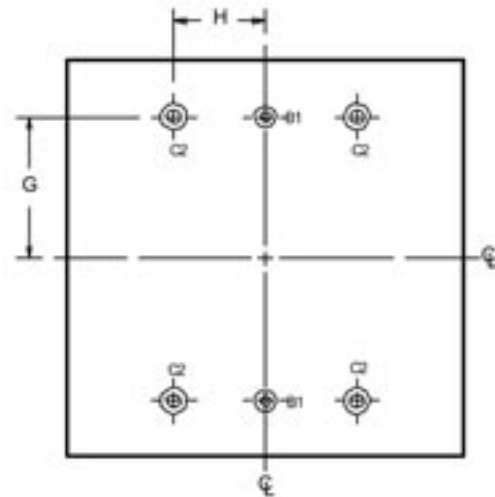
TOP PLATE FOR ALL AXY SERIES TABLES



BOTTOM PLATE FOR AXY2506, AXY4006 & AXY4009 SERIES TABLES

B1- CLEARANCE (AND CSK IN AXY 2506) FOR 1/4 FLD MACHINE SCREWS FOR MOUNTING ON A60 SERIES SLIDER OR OTHER SURFACE

B2- CLEARANCE FOR 1/4 DIA ØPHD AND FOR MOUNTING ON ANY CUSTOMER SURFACE



BOTTOM PLATE FOR AXY2509, AXY2512, AXY6009, AXY6012 & AXY6015 SERIES TABLES

B1- CLEARANCE AND CSK FOR 1/4 FLD MACHINE SCREWS FOR MOUNTING ON A60 SERIES SLIDER OR OTHER SURFACE

C2- CLEARANCE AND CSK FOR 5/16 FLD MACHINE SCREW FOR MOUNTING ON B60 SERIES SLIDER OR OTHER SURFACE

Model Number Top & Bottom	Plate Size Mtg. Holes	Top Plate Mtg. Holes	Bottom Plate	D	E	G	H
AXY2506W1	1/4" X 6.75" X 6.75"	T1 & T2	B1	2.500" On Ctr. Line			
AXY2509W1	1/4" X 9.75" X 9.75"	T2 & T3	C2			3.500"	2.250"
AXY2512W1	1/4" X 12.75" X 12.75"	T2 & T3	C2			3.500"	2.250"
AXY4006W1	3/8" X 6" X 6"	T1 & T2	B1 & B2	2.500"	2.500"		
AXY4009W1	3/8" X 9" X 9"	T1 & T2	B1 & B2	2.500"	2.500"		
AXY6009W1	3/8" X 9" X 9"	T2 & T3	Ctr. Line			3.500"	2.250"
AXY6012W1	3/8" X 12" X 12"	T2 & T3	C2			5.000"	2.250"
AXY6015W1	3/8" X 12" X 12"	T2 & T3	C2			5.000"	2.250"