

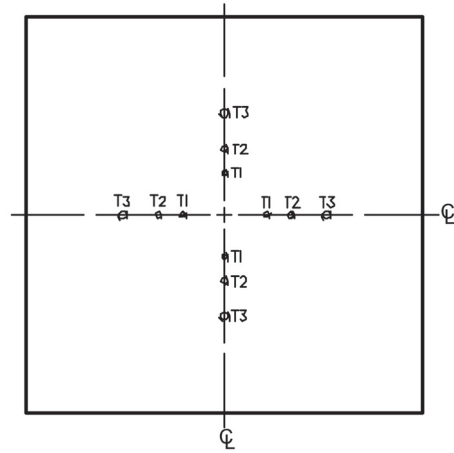
AXY Table Plates

T1- 8-32 ON A 2.062 DIA BOLT CIRCLE
ACCEPTS A25 ADAPTERS & A2506TS TURNTABLES

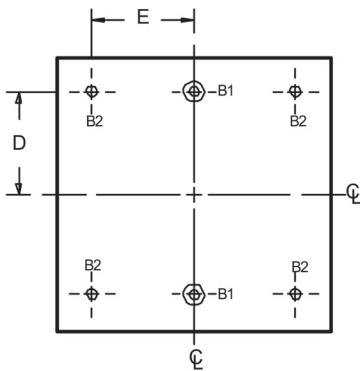
T2- 10-32 ON A 3.250 DIA BOLT CIRCLE
ACCEPTS A40 ADAPTERS, A4007TS, AND *A4800 ROTARY TABLES

T3- 1/4-20 ON A 5.000 DIA BOLT CIRCLE
ACCEPTS A60 ADAPTERS AND * A4800 ROTARY TABLE

*A6000TX ADAPTER PLATE USED TO MOUNT
A4800 ROTARY TABLE



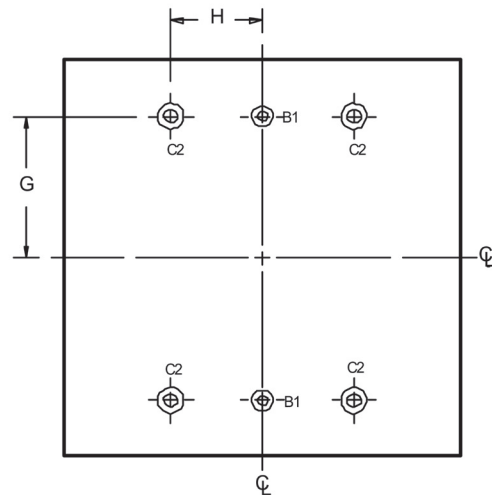
TOP PLATE FOR ALL AXY SERIES TABLES



BOTTOM PLATE FOR AXY2506, AXY4006 & AXY4009 SERIES TABLES

B1- CLEARANCE (AND CSK IN AXY 2506) FOR 1/4 FLHD MACHINE SCREWS FOR MOUNTING ON A60 SERIES SLIDER OR OTHER SURFACE

B2- CLEARANCE FOR 1/4 DIA CPHD AND FOR MOUNTING ON ANY CUSTOMER SURFACE



BOTTOM PLATE FOR AXY2509, AXY2512, AXY6009, AXY6012 & AXY6015 SERIES TABLES

B1- CLEARANCE AND CSK FOR 1/4 FLHD MACHINE SCREWS FOR MOUNTING ON A60 SERIES SLIDER OR OTHER SURFACE

C2- CLEARANCE AND CSK FOR 5/16 FLHD MACHINE SCREW FOR MOUNTING ON B90 SERIES SLIDER OR OTHER SURFACE

Model Number Top & Bottom	Plate Size Mtg. Holes	Top Plate Mtg. Holes	Bottom Plate	D	E	G	H
AXY2506W1	1/4" X 6.75" X 6.75"	T1 & T2	B1	2.500" On Ctr. Line			
AXY2509W1	1/4" X 9.75" X 9.75"	T2 & T3	C2			3.500"	2.250"
AXY2512W1	1/4" X 12.75" X 12.75"	T2 & T3	C2			3.500"	2.250"
AXY4006W1	3/8" X 6" X 6"	T1 & T2	B1 & B2	2.500"	2.500"		
AXY4009W1	3/8" X 9" X 9"	T1 & T2	B1 & B2	3.500"	3.500"		
AXY6009W1	3/8" X 9" X 9"	T2 & T3	Ctr. Line			3.500"	2.250"
AXY6012W1	3/8" X 12" X 12"	T2 & T3	C2			5.000"	2.250"
AXY6015W1	3/8" X 12" X 12"	T2 & T3	C2			5.000"	2.250"