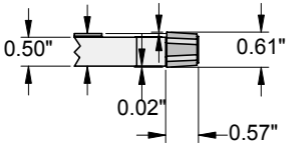


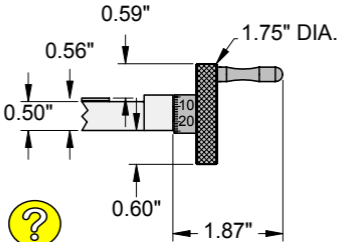
SLIDER LENGTH S	D2	D3
STANDARD 1.50"	0.688"	1.188"
OPTIONAL 2.00"	1.188"	1.688"
OPTIONAL 3.00"	1.188"	2.688"

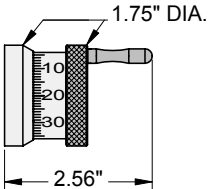
LEAD SCREW EXTENSION DIA.
 0.218" FOR B & P20
 0.231" FOR C & P40
 0.250" FOR K1 & Q1
 0.250" FOR K2 & Q2

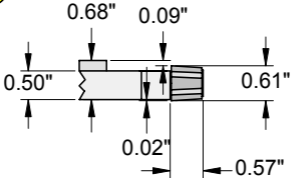


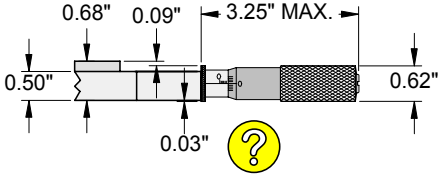
0.56" 0.027"



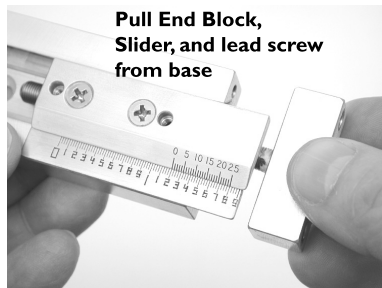
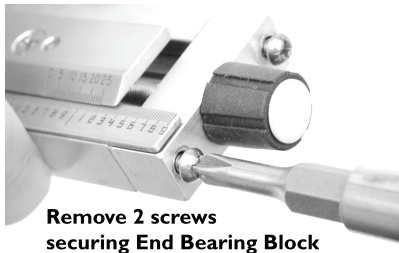








To access the base mounting holes in Series A15 UniSlides, you need to remove the end bearing block, slider and knob from the base.



When reassembling, be sure to center the end bearing block and collar.