

Elevating Tables

UniSlide Series B29, B49, and B69

Although most UniSlide Assemblies can be used in a vertical position, some applications require greater strength and rigidity, and more overall versatility. UniSlide Elevating Tables are designed for these applications.

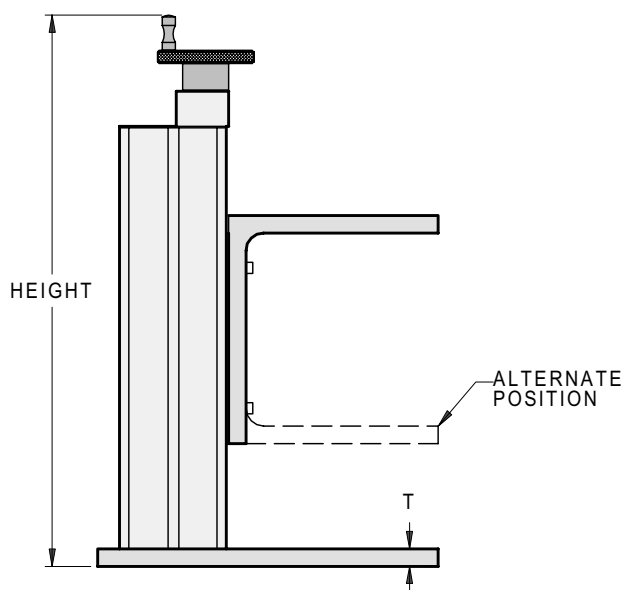
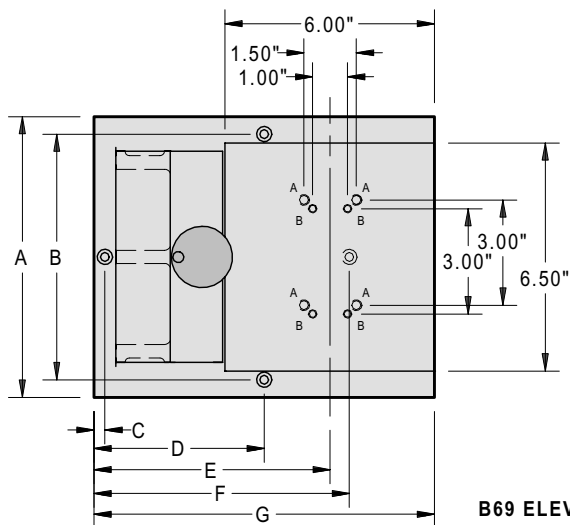
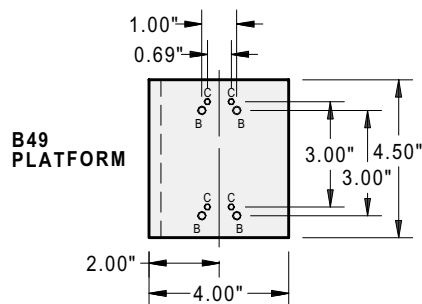
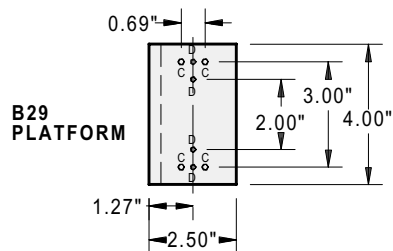
Because the dovetail base is freestanding, B29, B49 and B69 Series Elevating Tables use the deeper "B"-type cross sections for greater rigidity. See page 1.54. The standard lead screw is the W1, with 0.100" revo-

lution. Each Elevating Table features a convenient top-mounted knob for easy table height adjustment, and has a large, stable base plate and a right angle platform secured to the slider. This right angle platform may be removed and remounted in an inverted position. This platform can also be purchased separately.

Available Options

Elevating Tables are available in plain or Black Anodized finishes, with finer pitch lead screws, with Graduated Knob type with position readout, and with longer travel distances.

A.	5/16-18 UNC THRU
B.	1/4-20 UNC THRU
C.	10-32 UNF THRU
D.	8-32 UNF THRU



Keyword: elevating

Elevating Table Models and Specifications (see drawing on previous page) All dimensions are in inches.

Model No.	B29 Series			B49 Series			B69 Series		
	B2904W1	B2906W1	B2909W1	B4906W1	B4909W1	B4912W1	B6909W1	B6912W1	B6915W1
Travel Distance	1 1/2	3 1/2	6 1/2	2	5	8	3	6	9
Height	6 7/8	8 3/4	11 7/8	8 7/8	11 7/8	14 7/8	12 3/4	15 3/4	18 3/4

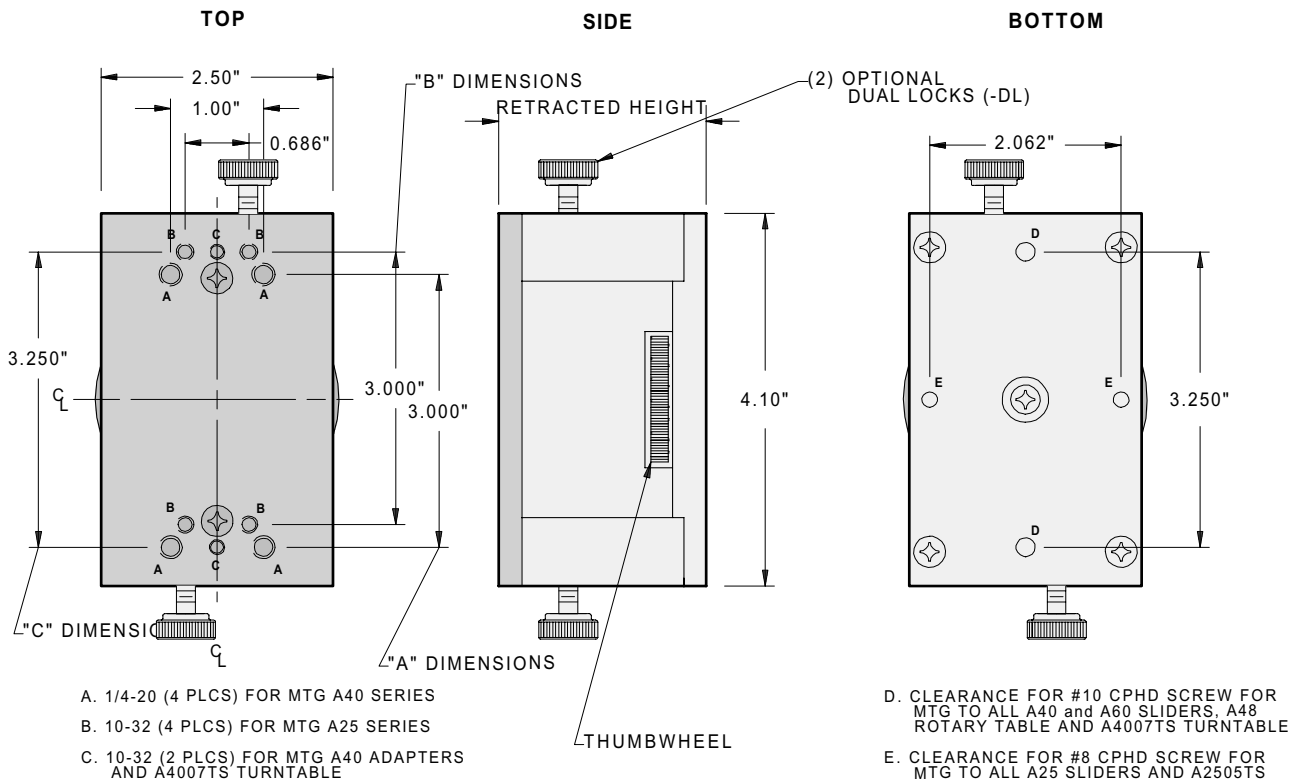
Series	Load Capacity	Min. Platform Height	Base Clearance Holes	A	B	C	D	E	F	G	T
B29	30 lbs	3.375	0.196	4	3 1/4	3/8	2	3 9/16	3 5/8	4	3/8
B49	50 lbs	4.5	0.25	6	5	5/16	3 21/32	5 7/32	5 5/16	7 5/16	1/2
B69	100 lbs	6.5	0.25	8	7	5/16	4 7/8	6 7/8	7 5/16	9 3/4	1/2

UniSlide A39 Series Elevating Tables

With these tables, the space above and around the table top is unobstructed. Our design provides a stable platform with a large thumb wheel for moving small loads. Central load capacity is 25

lbs. The standard lead screw is 3/8-20 double lead Acme, with a lead of 0.100". Other lead screws are available, please consult factory. Options include dual locking screw and black anodized finish.

Model Number	Retracted Height	Vertical Travel
A3901W1	2.25"	1.00"
A3903W1	4.50"	3.25"



NOTE: TOP PLATE MUST BE REMOVED FOR ACCESS TO MTG HOLES IN BASE

Note: This drawing shows table with optional locking screws.