

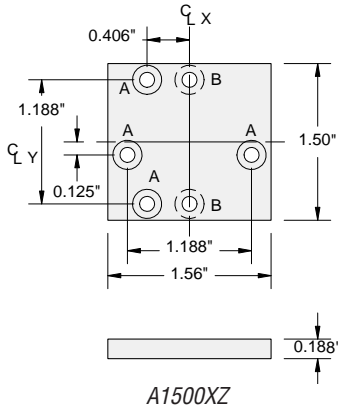
XZ Adapter Plates

XZ Adapter Plates and Brackets allow UniSlide Assemblies to be positioned vertically or end mounted, facing any one of four directions, all of which are perpendicular to the X or Y planes.

Look at Combining UniSlides, page 1.57, now for examples. The XZ Plate Adapter end-mounts the UniSlide using the two holes in the nameplate end of the base. It is for light loads and short slides, while

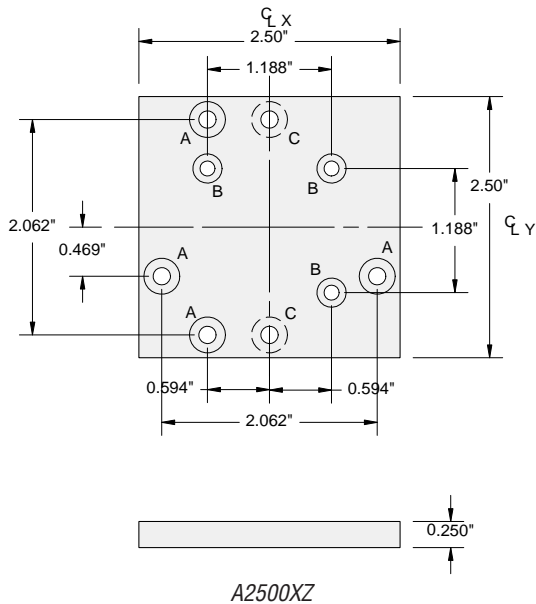
the bracket designs (page 1.49) are more rigid to handle heavier loads.

At the end of this section is the A6000TX adapter for A4800 Rotary tables.



A= (4) C'BORE FOR 6-32 PNHD SCREW. FOR MOUNTING A15 SERIES UNISLIDE VERTICALLY

B= (2) C'BORE FOR 6-32 PNHD SCREW. FOR MOUNTING PLATE TO A15 SERIES UNISLIDE (OPPOSITE SIDE)

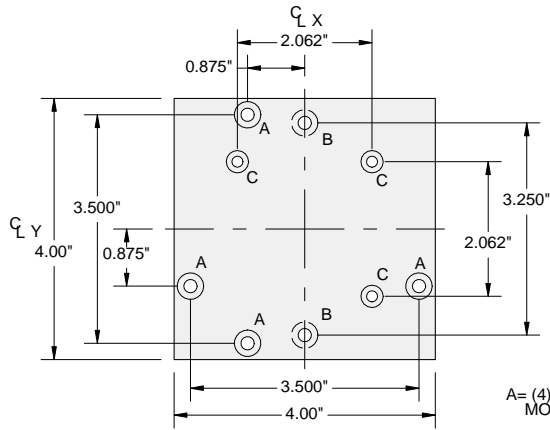


A= (4) C'BORE FOR 8-32 PNHD SCREW. FOR MOUNTING A25 SERIES UNISLIDE VERTICALLY

B= (3) C'BORE FOR 6-32 PANHEAD. FOR MOUNTING A15 SERIES UNISLIDE VERTICALLY

C= (2) C'BORE FOR 8-32 PNHD SCREW. FOR MOUNTING PLATE TO 25 SERIES UNISLIDE (OPPOSITE SIDE)

XZ Adapter Plates for A40 and A60 Series

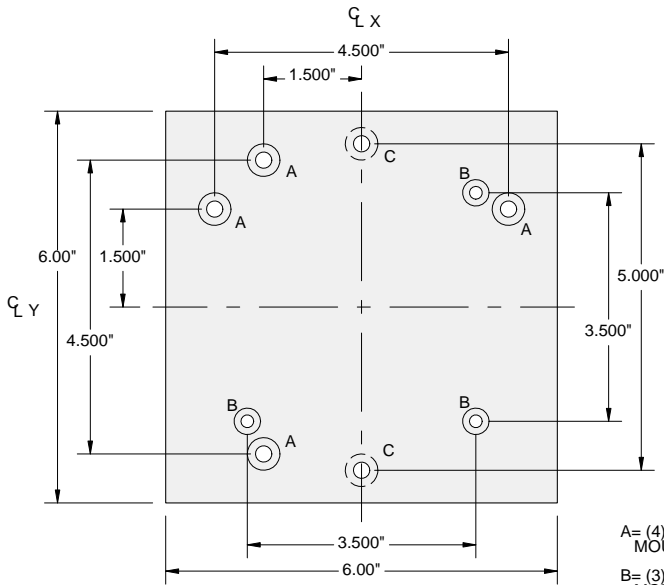


A= (4) C'BORE FOR 10-32 PNHD SCREW, FOR MOUNTING A40 SERIES UNISLIDE VERTICALLY

B= (2) C'BORE FOR 10-32 PNHD SCREW, FOR MOUNTING PLATE TO 40 SERIES UNISLIDE (OPPOSITE SIDE)

C= (3) C'BORE FOR 8-32 PNHD SCREW, FOR MOUNTING A25 SERIES UNISLIDE VERTICALLY

A4000XZ



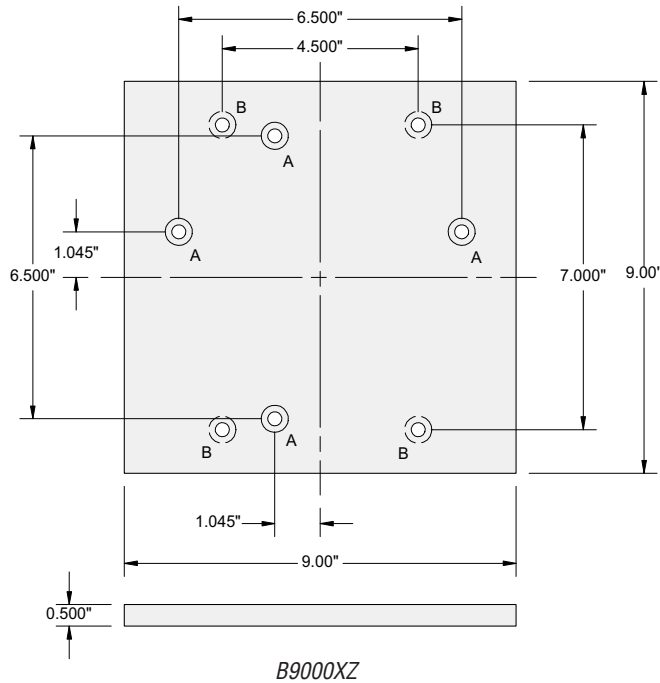
A= (4) C'BORE FOR 1/4-20 PNHD SCREW, FOR MOUNTING A60 SERIES UNISLIDE VERTICALLY

B= (3) C'BORE FOR 10-32 PANHEAD, FOR MOUNTING A40 SERIES UNISLIDE VERTICALLY

C= (2) C'BORE FOR 1/4-20 PNHD SCREW, FOR MOUNTING PLATE TO 60 SERIES UNISLIDE (OPPOSITE SIDE)

A6000XZ

XZ Adapter Plate for B90 Series

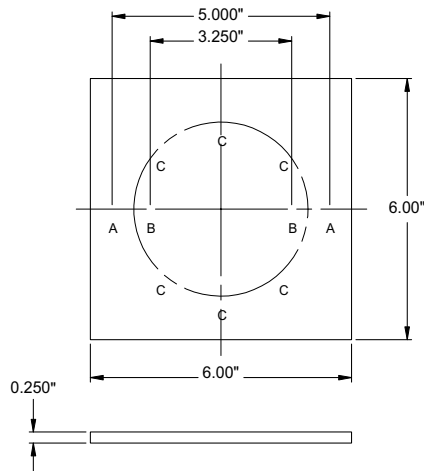


A= (4) C'SINK FOR 5/16-18 FLHD SCREW. FOR MOUNTING B90 SERIES UNISLIDE VERTICALLY

B= (4) C'SINK FOR 5/16-18 FLHD SCREW FOR MOUNTING PLATE TO B90 SERIES UNISLIDE (OPPOSITE SIDE)

Adapter Plate A6000TX for A4800 Series Rotary Table

- A: (2) C'SINK FOR 1/4" FLHD SCREW. FOR MOUNTING A60 SERIES UNISLIDE
- B: (2) C'SINK FOR #10 FLHD SCREW. FOR MOUNTING TO A40 SERIES UNISLIDE
- C: (6) TAP 10-32 ON A 4" BOLT CIRCLE. FOR MOUNTING 4800 SERIES ROTARY TABLE



XZ Adapter Brackets

XZ Adapter Brackets and Plates allow UniSlide Assemblies to be positioned vertically, facing any one of four directions, all of which are perpendicular to the X or Y planes. Look at Combining UniSlides, page 1.57, now for examples. The XZ plates (page 1.46) are for light loads and

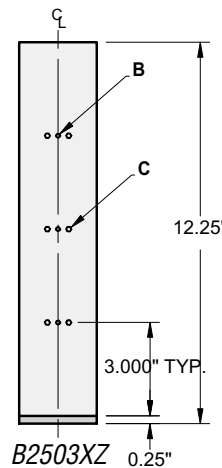
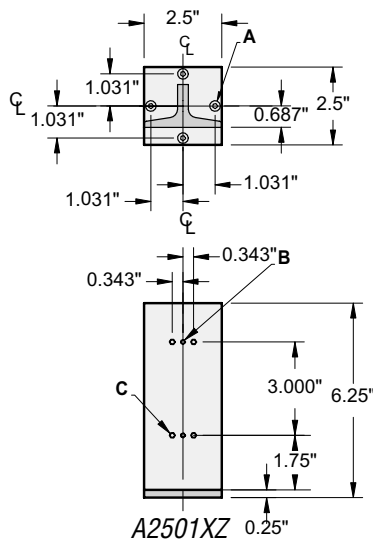
short slides, while brackets support the dovetail base, provide more rigidity and handle heavier loads.

Similar to the XY adapter plan, a bracket for a given Series will accept the base of that Series and the next smaller Series. Those brackets with the "B" prefix, such as B4004XZ, are designed

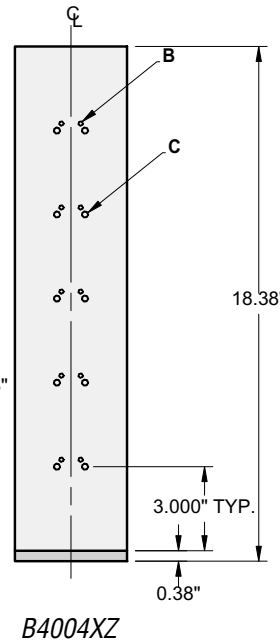
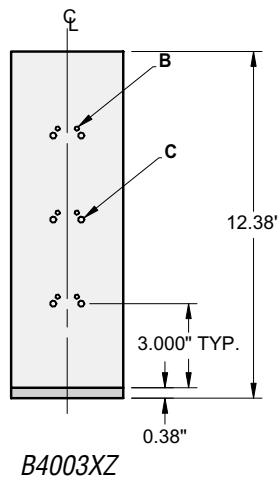
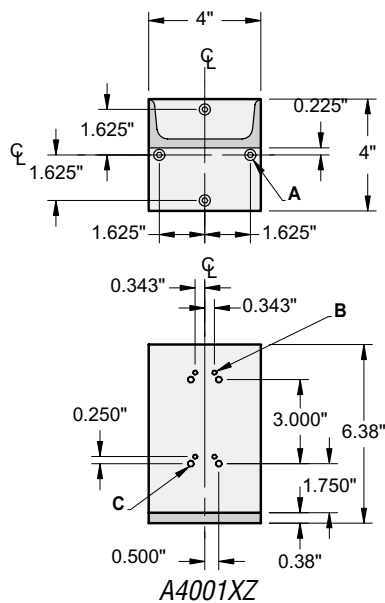
for dual use: they accept both manual "A" UniSlides or motor drive "B" bases. Optional longer length sliders for X axis UniSlides are recommended to increase stability when using medium or long XZ brackets.

Keyword: XZ adapter

XZ Adapter Brackets for A15, A25 and A40 Series

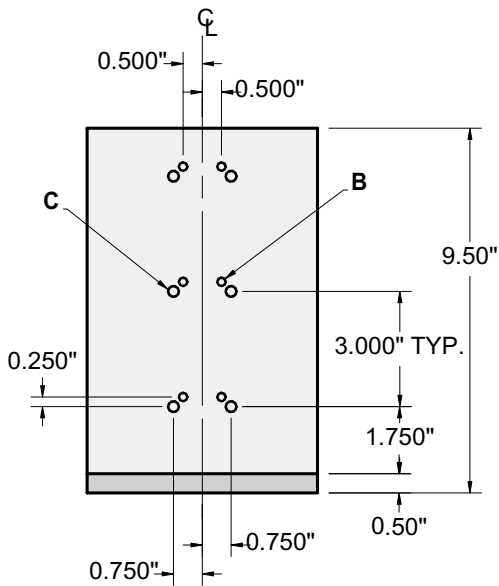
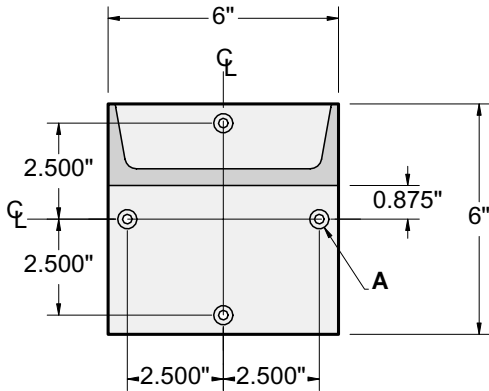


A=(4) COUNTER BORE FOR #8 PANHEAD.
FOR MOUNTING TO 25 SERIES SLIDER,
A2505TS, A4007TS, AND AX40
B= 8-32 THREAD FOR MOUNTING 15
SERIES UNISLIDE
C= 10-32 THREAD FOR MOUNTING
25 SERIES UNISLIDE

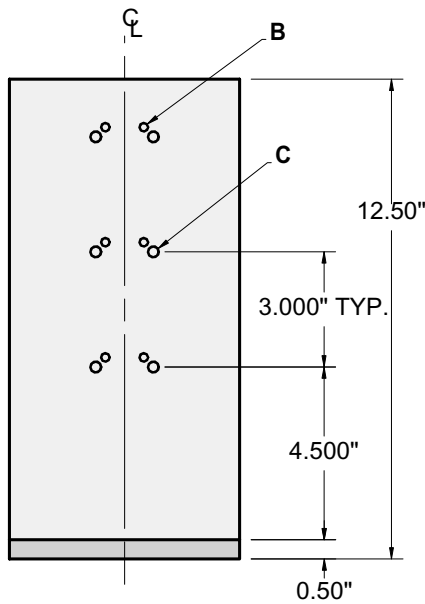


A=(4) COUNTER BORE FOR #10 PANHEAD.
FOR MOUNTING TO 40 SERIES SLIDER,
60 SERIES SLIDERS, A4007TS,
A4800 ROTARY TABLE, AXY40 AND AXY60

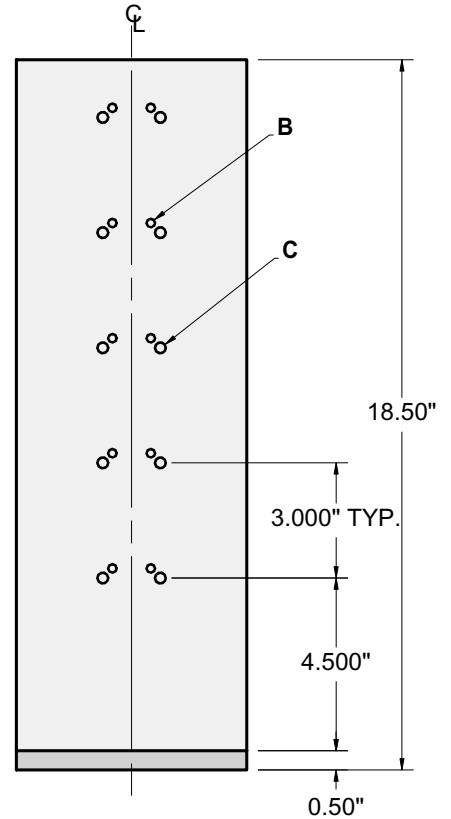
B=10-32 THREAD FOR MOUNTING 25
SERIES UNISLIDE
C= 1/4-20 THREAD FOR MOUNTING
40 SERIES UNISLIDE



A6001XZ



B6003XZ



B6004XZ

A = (4) COUNTERBORE FOR 1/4" PANHEAD, FOR MOUNTING TO 60 SERIES SLIDERS, B90 SERIES SLIDERS AND AX60

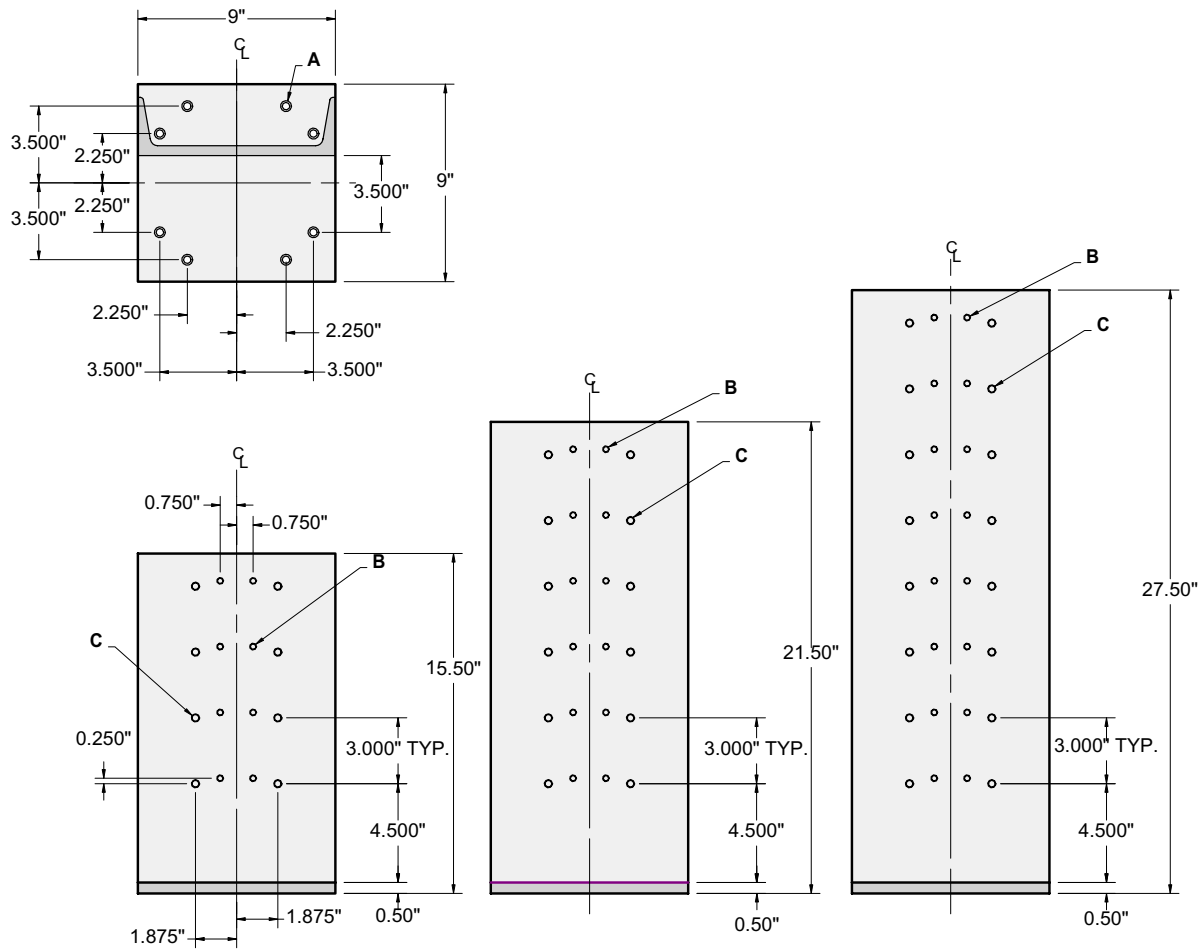
B = 1/4-20 THREAD FOR MOUNTING 40 SERIES UNISLIDE

C = 5/16-18 THREAD FOR MOUNTING 60 SERIES UNISLIDE

Note: Throughout this catalog you'll see **Keywords in a RED rectangle.**

Clicking the word takes you the relevant page on our website. There you can get more information, including access to drawings, specs, prices, photos of examples and our latest innovations.

XZ Adapter Brackets for B90 Series



B9001XZ

B9002XZ

B9003XZ

A =(8) COUNTERBORE FOR 5/16 CPHD , FOR MOUNTING TO B90 SERIES SLIDERS

B = 5/16-18 THREAD FOR MOUNTING 60 SERIES UNISLIDE

C = 3/8-16 THREAD FOR MOUNTING B90 SERIES UNISLIDE