

## XZ Adapter Brackets

XZ Adapter Brackets and Plates allow UniSlide Assemblies to be positioned vertically, facing any one of four directions, all of which are perpendicular to the X or Y planes. Look at Combining UniSlides, page 1.57, now for examples. The XZ plates (page 1.46) are for light loads and

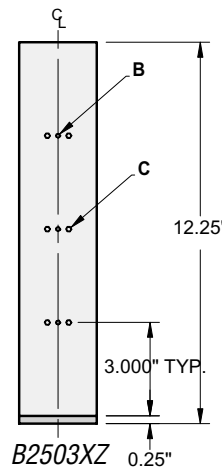
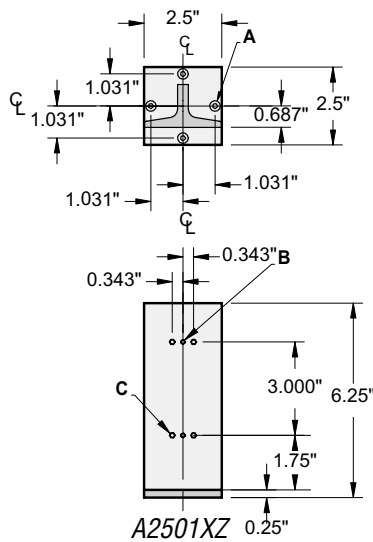
short slides, while brackets support the dovetail base, provide more rigidity and handle heavier loads.

Similar to the XY adapter plan, a bracket for a given Series will accept the base of that Series and the next smaller Series. Those brackets with the "B" prefix, such as B4004XZ, are designed

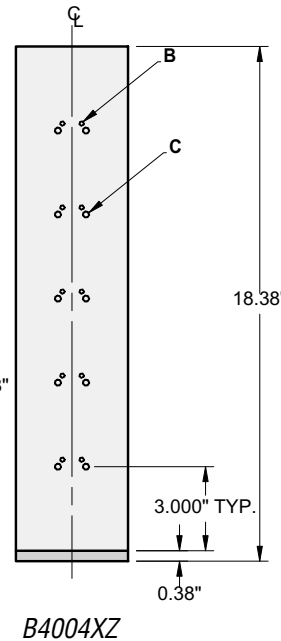
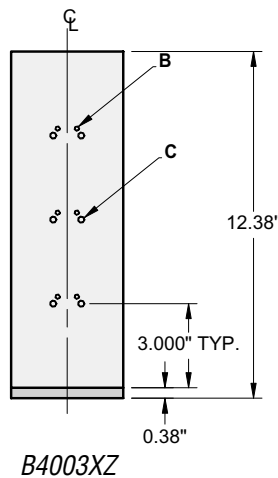
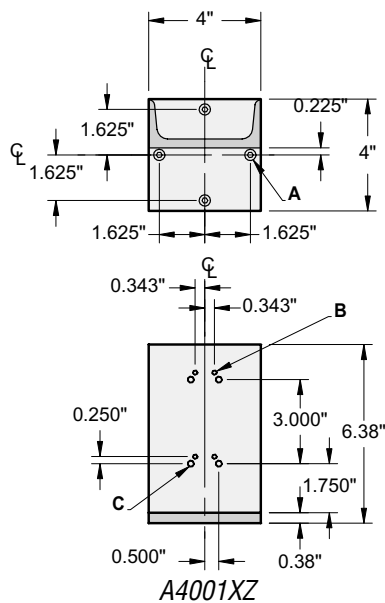
for dual use: they accept both manual "A" UniSlides or motor drive "B" bases. Optional longer length sliders for X axis UniSlides are recommended to increase stability when using medium or long XZ brackets.

**Keyword: XZ adapter**

### XZ Adapter Brackets for A15, A25 and A40 Series

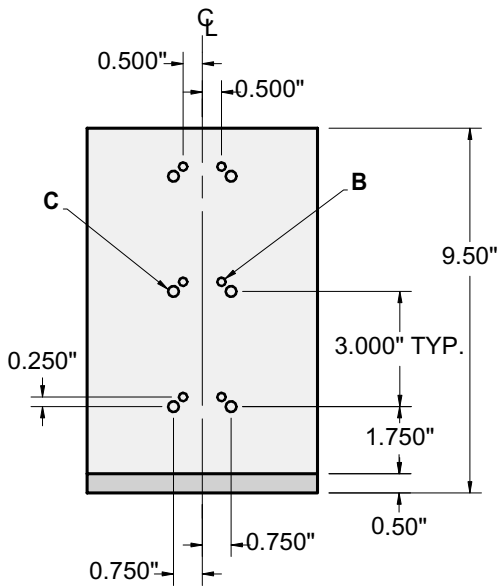
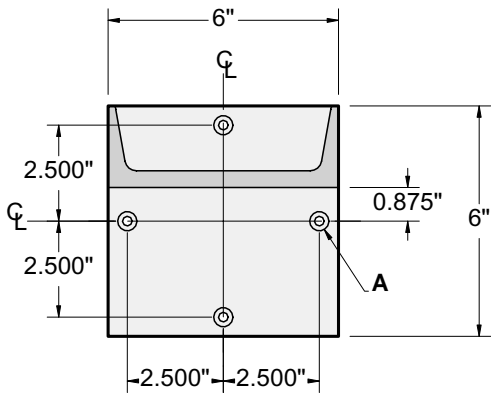


A=(4) COUNTER BORE FOR #8 PANHEAD.  
FOR MOUNTING TO 25 SERIES SLIDER,  
A2505TS, A4007TS, AND AX40  
B= 8-32 THREAD FOR MOUNTING 15  
SERIES UNISLIDE  
C= 10-32 THREAD FOR MOUNTING  
25 SERIES UNISLIDE

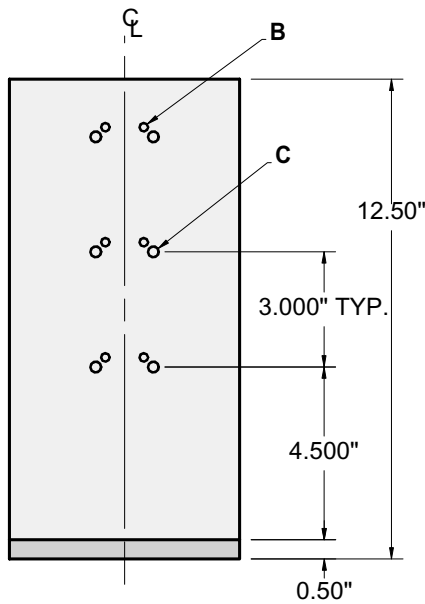


A=(4) COUNTER BORE FOR #10 PANHEAD.  
FOR MOUNTING TO 40 SERIES SLIDER,  
60 SERIES SLIDERS, A4007TS,  
A4800 ROTARY TABLE, AXY40 AND AXY60

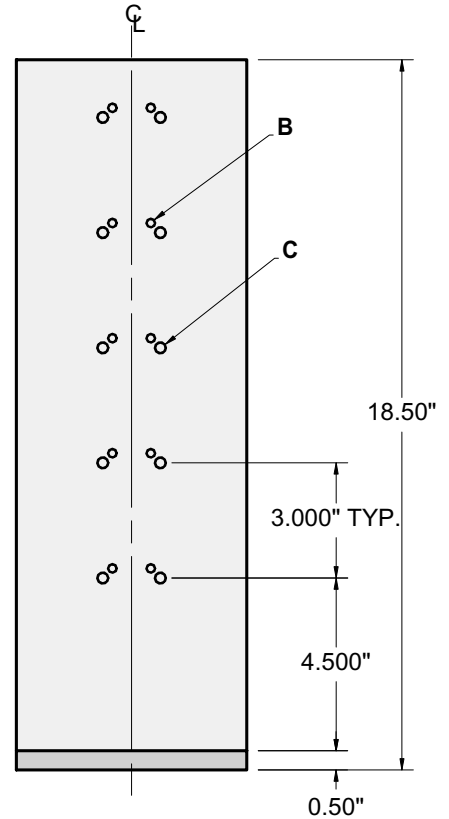
B=10-32 THREAD FOR MOUNTING 25  
SERIES UNISLIDE  
C= 1/4-20 THREAD FOR MOUNTING  
40 SERIES UNISLIDE



A6001XZ



B6003XZ



B6004XZ

A = (4) COUNTERBORE FOR 1/4" PANHEAD, FOR MOUNTING TO 60 SERIES SLIDERS, B90 SERIES SLIDERS AND AX60

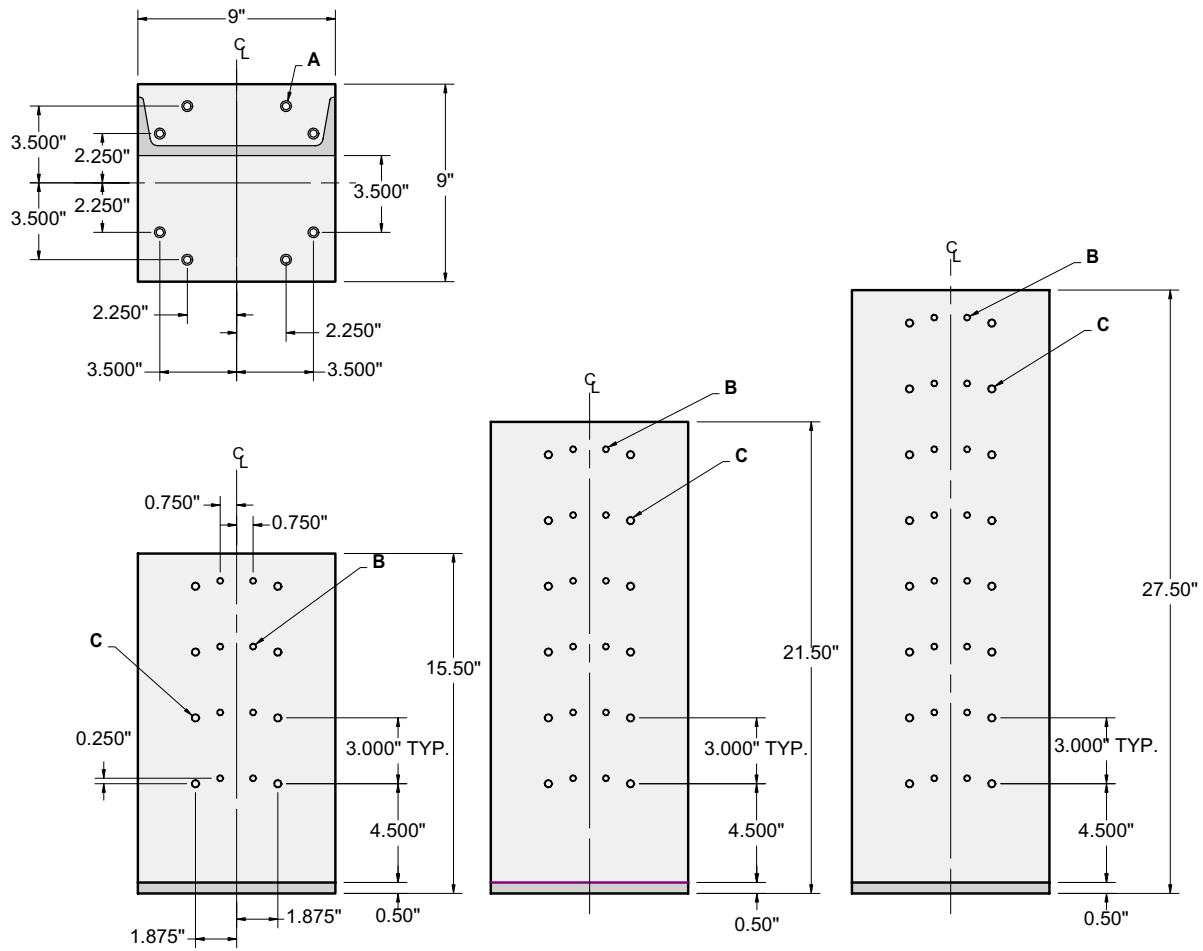
B = 1/4-20 THREAD FOR MOUNTING 40 SERIES UNISLIDE

C = 5/16-18 THREAD FOR MOUNTING 60 SERIES UNISLIDE

**Note:** Throughout this catalog you'll see **Keywords in a RED rectangle**.

Clicking the word takes you the relevant page on our website. There you can get more information, including access to drawings, specs, prices, photos of examples and our latest innovations.

**XZ Adapter Brackets for B90 Series**



**B9001XZ**

**B9002XZ**

**B9003XZ**

A =(8) COUNTERBORE FOR 5/16 CPHD , FOR MOUNTING TO B90 SERIES SLIDERS

B = 5/16-18 THREAD FOR MOUNTING 60 SERIES UNISLIDE

C = 3/8-16 THREAD FOR MOUNTING B90 SERIES UNISLIDE