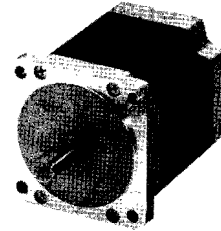


85 mm (3.35 in.)

Step Angle 1.8°

PK Series Standard Type



Specifications (RoHS)

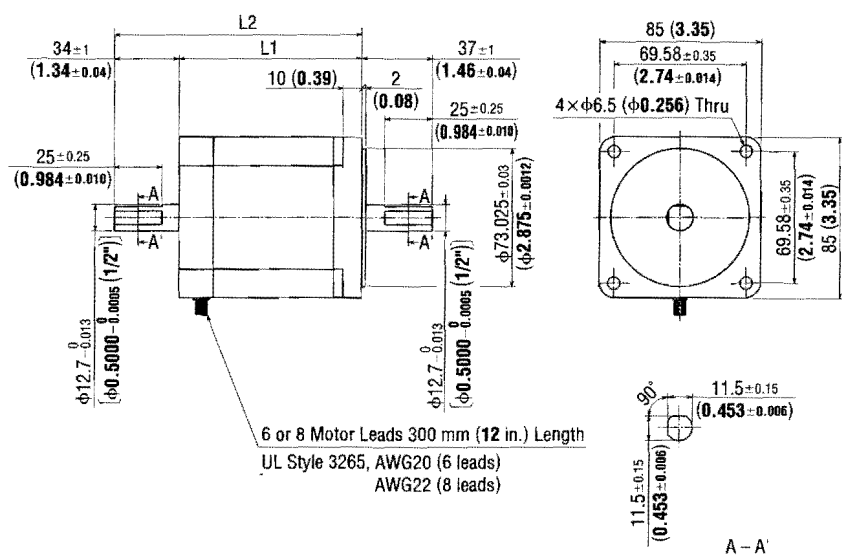
Model	Connection Type	Holding Torque		Rated Current	Voltage	Resistance	Inductance	Rotor Inertia J		Lead Wires
		N-m	oz-in					kg-m <sup>2</sup>	oz-in <sup>2</sup>	
PK296-01AA	Bipolar (Series)	3.1	440	1.4	6.2	4.4	30.8	1400 × 10 <sup>-7</sup>	7.7	6
PK296-01BA	Unipolar	2.2	310	2	4.4	2.2	7.7			
PK296-02AA	Bipolar (Series)	3.1	440	2.1	4.2	2	14	1400 × 10 <sup>-7</sup>	7.7	6
PK296-02BA	Unipolar	2.2	310	3	3	1	3.5			
PK296-03AA	Bipolar (Series)	3.1	440	3.18	2.8	0.96	6	1400 × 10 <sup>-7</sup>	7.7	6
PK296-03BA	Unipolar	2.2	310	4.5	2	0.48	1.5			
PK296-F4.5A	Bipolar (Parallel)	3.1	440	6.3	1.4	0.24	1.5	1400 × 10 <sup>-7</sup>	7.7	8
PK296-F4.5B	Bipolar (Series)	3.1	440	3.18	2.8	0.96	6			
PK299-01AA	Bipolar (Series)	6.2	880	1.4	9	6.4	56	2700 × 10 <sup>-7</sup>	14.8	6
PK299-01BA	Unipolar	4.4	620	2	6.4	3.2	14			
PK299-02AA	Bipolar (Series)	6.2	880	2.1	6	3	24	2700 × 10 <sup>-7</sup>	14.8	6
PK299-02BA	Unipolar	4.4	620	3	4.2	1.5	6			
PK299-03AA	Bipolar (Series)	6.2	880	3.18	3.9	1.32	10	2700 × 10 <sup>-7</sup>	14.8	6
PK299-03BA	Unipolar	4.4	620	4.5	2.8	0.66	2.5			
PK299-F4.5A	Bipolar (Parallel)	6.2	880	6.3	1.9	0.33	2.5	2700 × 10 <sup>-7</sup>	14.8	8
PK299-F4.5B	Bipolar (Series)	6.2	880	3.18	3.9	1.32	10			
PK2913-01AA	Bipolar (Series)	9.3	1320	1.4	10	7.6	76.8	4000 × 10 <sup>-7</sup>	22	6
PK2913-01BA	Unipolar	6.6	930	2	7.6	3.8	19.2			
PK2913-02AA	Bipolar (Series)	9.3	1320	2.8	5.3	1.94	16.8	4000 × 10 <sup>-7</sup>	22	6
PK2913-02BA	Unipolar	6.6	930	4	3.8	0.97	4.2			
PK2913-F4.0A	Bipolar (Parallel)	9.3	1320	5.6	2.6	0.49	4.2	4000 × 10 <sup>-7</sup>	22	8
PK2913-F4.0B	Bipolar (Series)	9.3	1320	2.8	5.3	1.94	16.8			
PK2913-F4.0B	Unipolar	6.6	930	4	3.8	0.97	4.2			

How to read specifications table → Page C-11  
 Wirings and connections → Page C-211

Dimensions Unit = mm (in.)

Model	L1	L2	Mass kg (lb.)	DXF
PK296-01AA PK296-F4.5A	66 (2.60)	-	1.7 (3.7)	B122U
PK296-01BA PK296-F4.5B	-	100 (3.94)	-	-
PK299-01AA PK299-F4.5A	96 (3.78)	-	2.8 (6.2)	B123U
PK299-01BA PK299-F4.5B	-	130 (5.12)	-	-
PK2913-01AA PK2913-F4.0A	126 (4.96)	-	3.8 (8.4)	B124U
PK2913-01BA PK2913-F4.0B	-	160 (6.30)	-	-

Enter the winding specification in the box (□) within the model name.



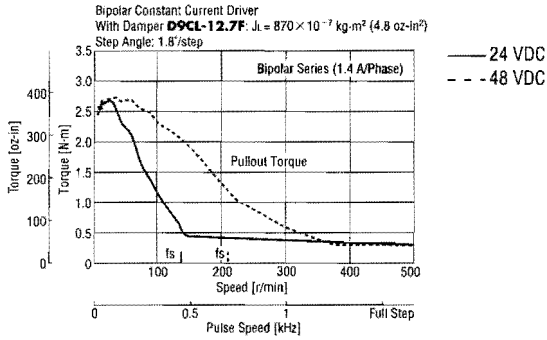
These dimensions are for the double shaft models. For the single shaft models, ignore the orange (□) area.

Introduction  
 AC Input  
 DC Input  
 AC Input  
 AC Input  
 DC Input  
 DC Input  
 Without Encoder  
 With Encoder  
 Controllers  
 Accessories  
 Installation

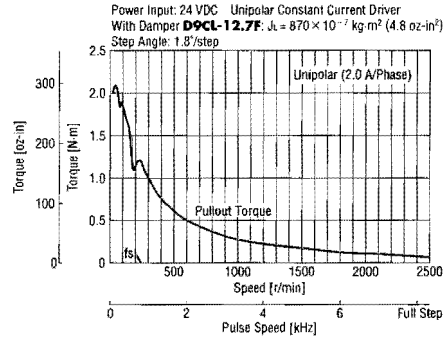
# Speed – Torque Characteristics

How to read speed – torque characteristics → Page C-12

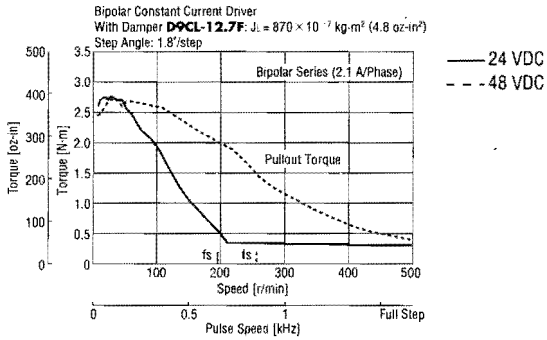
## PK296-01BA Bipolar (Series)



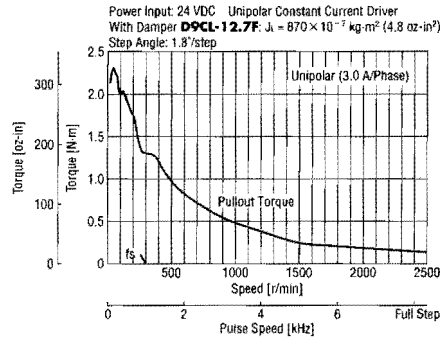
## PK296-01BA Unipolar



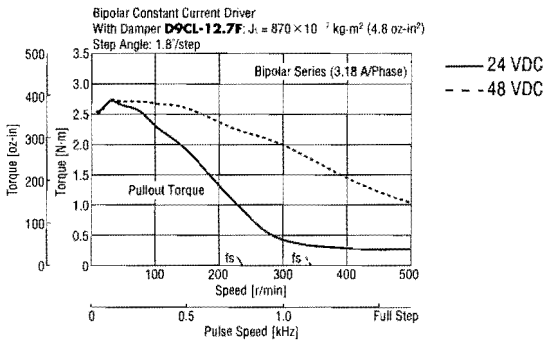
## PK296-02BA Bipolar (Series)



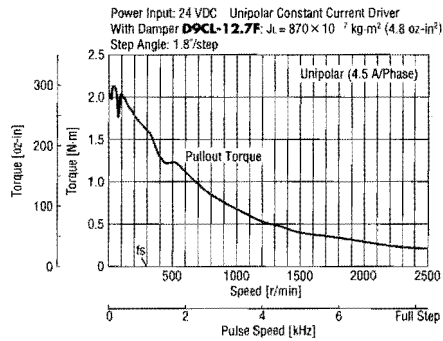
## PK296-02BA Unipolar



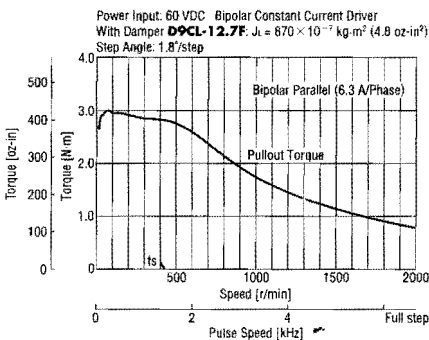
## PK296-03BA Bipolar (Series)



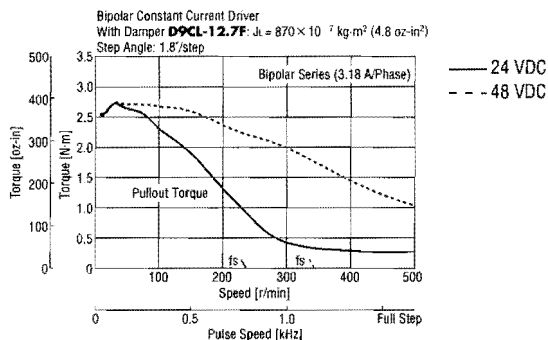
## PK296-03BA Unipolar



## PK296-F4.5B Bipolar (Parallel)



## PK296-F4.5B Bipolar (Series)



**Note:**  
● Pay attention to heat dissipation from motor as there will be a considerable amount of heat under certain conditions.  
Be sure to keep the temperature of the motor case under 100°C (212°F).