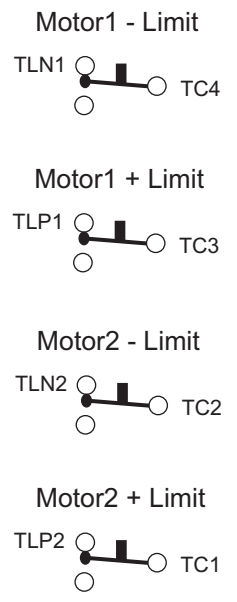
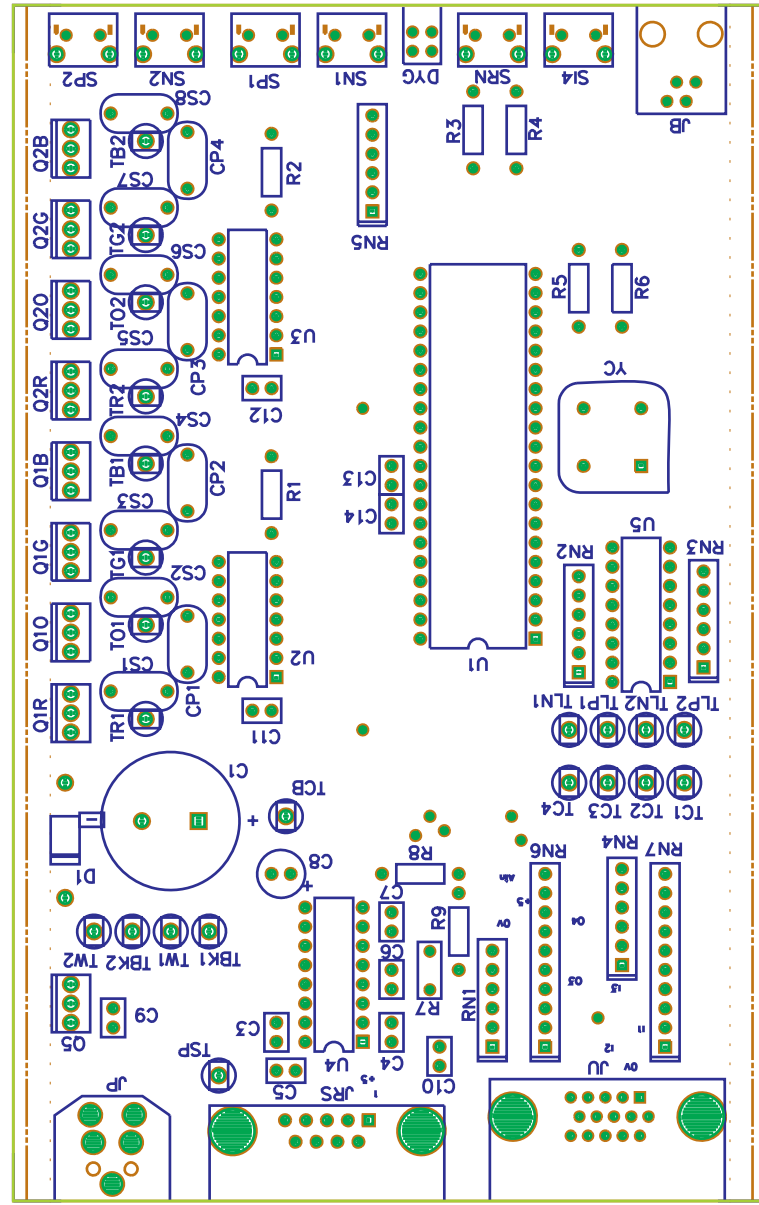
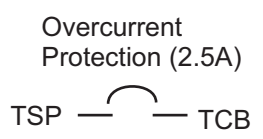
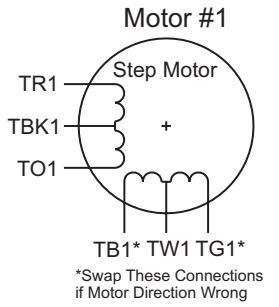
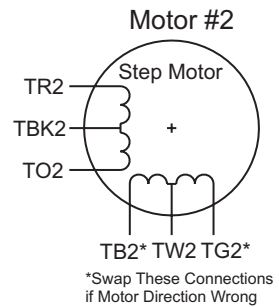


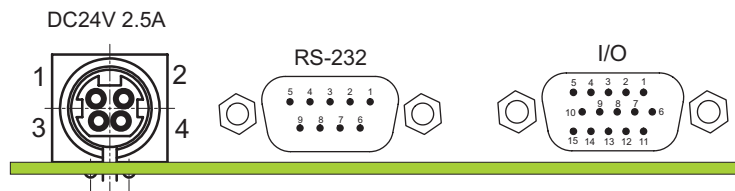
VXM Stepping Motor Controller

Supplement for Board Level VXM

External Connections



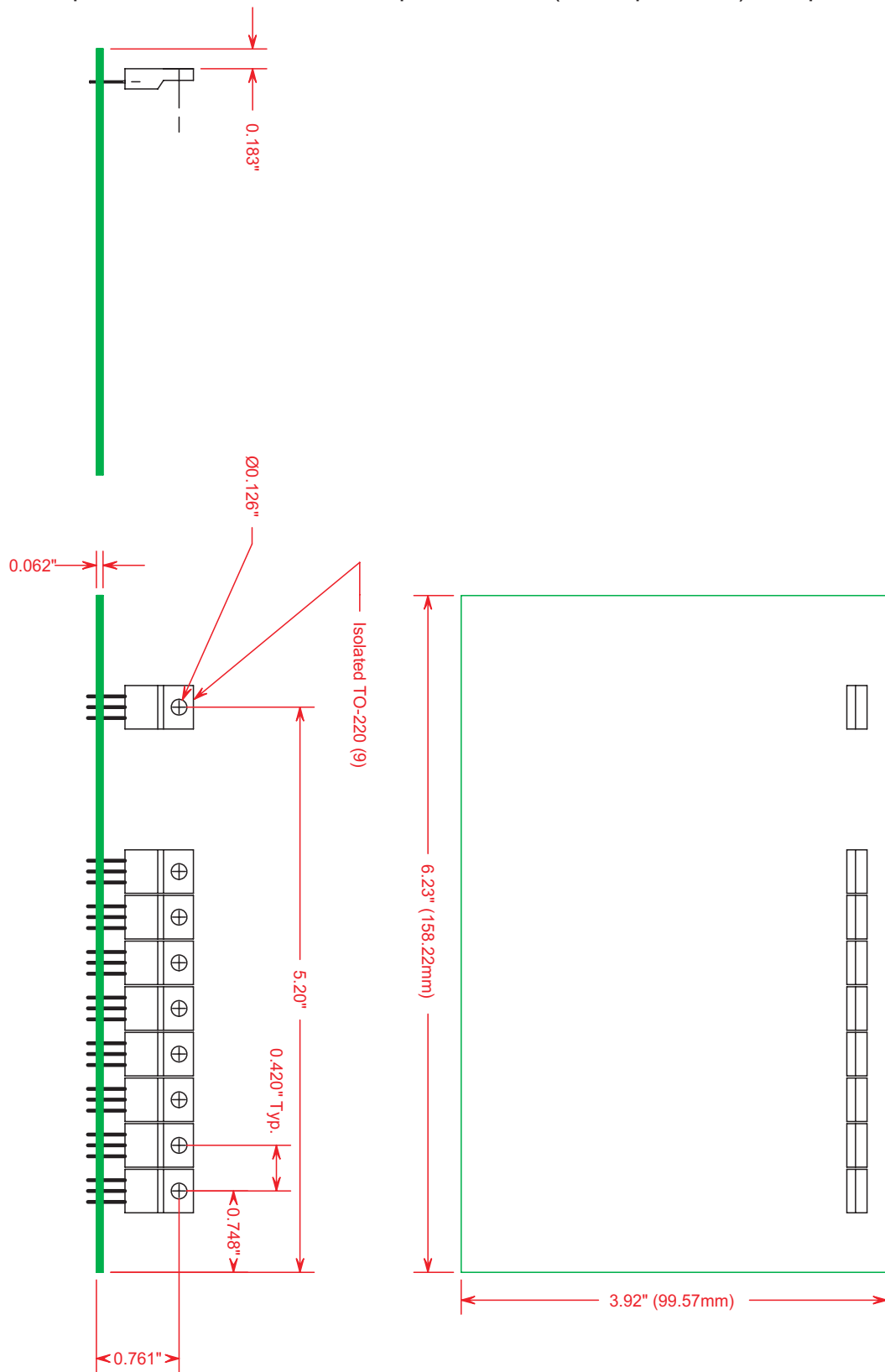
Power Inlet
(Kycan KPJ-4S)
1 & 2 Common
3 & 4 +24VDC



Ring Chassis Gnd
(Shell on JU & JRS
Also Chassis)

Location of Power Devices on PCB

Required Heat Sink Area: 20 square inches (129 square cm) / Amp



Specifications

Model # VXM-2-BRD

(VXM controller board for two motors, without cables, with full factory burn in / test, less heat sink, power switch, or over current protection)

Size: 3.92" x 6.23" x 1.50" (99.57 mm x 158.22 mm x 38.1 mm) (Width x Length x Height)

Voltage requirement: 17 to 25 VDC

Current requirement: 2.5 Amp Max.

Required Heat Sink Area: 20 square inches (129 square cm) / Amp

Power Inlet Connector: Kycon KPJ-4S (Mates with KPPX-4P on external power supply cable)

Motor, Limit, and Overcurrent Protection Connectors: Keystone Electronics # 1211 (0.110" Quick Fit Terminals)
(Mates with Amp # 60894-1 or equal on cable)

Refer to VXM Stepping Motor Controller User's Manual for more information

Contact Information

By Phone: 585-657-6151 and 800-642-6446

By Fax: 585-657-6153

Email: info@velmex.com

On the Internet: www.velmexcontrols.com and www.velmex.com

By mail: Velmex, Inc.
7550 State Route 5 & 20
Bloomfield, NY 14469 USA



Copyright 2006 Velmex Inc. All rights reserved. Velmex, the Velmex logo, UniSlide, and BiSlide are trademarks of Velmex Inc. All other trademarks are the property of their respective owners.

Document # VXM-OEM 7-12-06