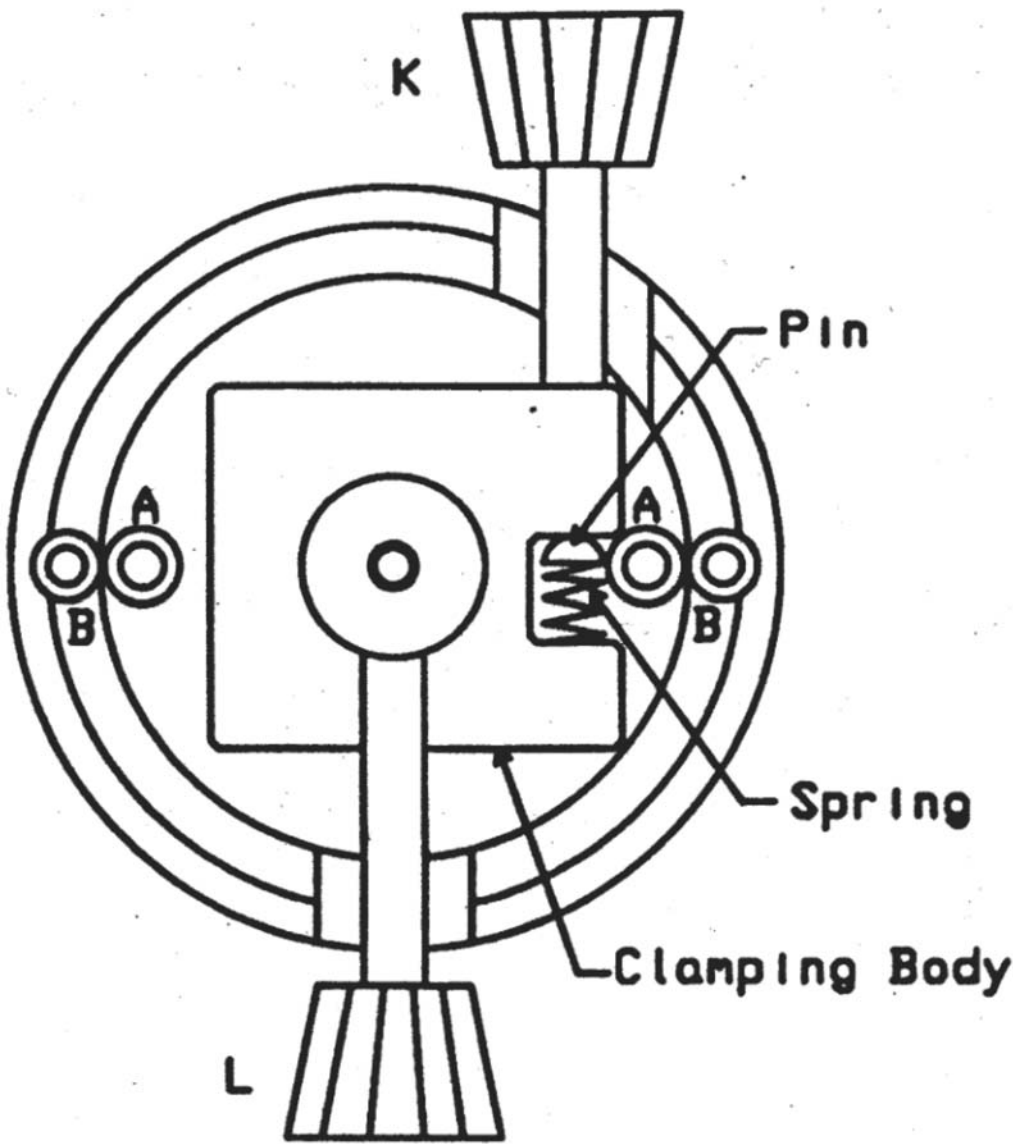


A2505T & TS Turntables  
Installation and Operation Instructions



1. Loosen both the clamping and fine adjusting knobs.
2. Remove center Phillips head screw.
3. Separate the top disc from the bottom disc. Remove the large ball bearing ring from the bottom disc.
4. Attach the bottom disc to your base plate using either the A or B holes.
5. To assemble, be sure the clamping body is located in the bottom disc with the compression spring pressing on the upright pin within the gap of the clamping body as shown. Slide the large ball bearing into place, assemble the two halves of the turntable and replace the center screw.

Operating instructions

1. Clamp the turntable in the region of the scale desired by tightening the locking knob, L. Do not over tighten.
2. To fine adjust, turn knob K.

- A = Clearance for 8-32 cap head screw  
-2 1/16" C to C
- B = Clearance for 6-32 cap head screw  
-2 11/16" C to C

Top View of Bottom Disc - Top disc removed