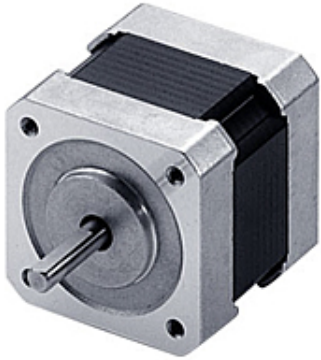

Item # PK245-01BA, Stepper Motor



Stepper Motor

The standard PK series stepper motor offers balanced performance enhanced by high torque, low vibration and low noise.



SPECIFICATIONS

| | |
|------------------|--|
| Product Line | VEXTA ® |
| Motor Type | 2-Phase |
| Motor Frame Size | 1.65 in. sq. |
| Shaft/Gear Type | Round Shaft (No Gearhead) |
| Holding Torque | Bipolar (Series) 61 oz-in Unipolar 45 oz-in |
| Type | Standard |
| Connection Type | Bipolar (Series) Unipolar |
| Lead Wires | 6 |

| | |
|-------------------------------------|--|
| Current per Phase (A/phase) | 0.85 [Bipolar (Series)] 1.2 [Unipolar] |
| Encoder | None |
| Shaft | Double |
| Voltage (VDC) | 5.6 [Bipolar (Series)] 4 [Unipolar] |
| Resistance (Ω /phase) | 6.6 [Bipolar (Series)] 3.3 [Unipolar] |
| Inductance (mH/phase) | 11.2 [Bipolar (Series)] 2.8 [Unipolar] |
| Step Angle | 1.8 ° |
| Rotor Inertia (oz-in ²) | 0.37 oz-in ² |
| RoHS Compliant | Yes |
| Insulation Resistance | 100 M Ω or more when 500 VDC megger is applied between the windings and the case under normal ambient temperature and humidity. |
| Dielectric Strength | Sufficient to withstand 0.5 kVAC at 50 Hz or 60 Hz applied between the windings and the case for 1 minute under normal ambient temperature and humidity. |
| Temperature Rise | Temperature rise of the windings is 176°F (80°C) or less measured by the change resistance method. (at rated current, at standstill, 2 phases energized) |
| Insulation Class | Class B [266°F (130°C)] |
| Ambient Temperature Range | 14 ~ 122°F (-10 ~ 50°C) (non-freezing) |
| Ambient Humidity | 85% or less (non-condensing) |
| Shaft Runout | 0.05 mm (0.002 in.) T.I.R. |
| Concentricity | 0.075 mm (0.003 in.) T.I.R. |
| Perpendicularity | 0.075 mm (0.003 in.) T.I.R. |
| Radial Play | 0.025 mm (0.001 in.) maximum of 5 N (1.12 lb.) |
| Axial Play | 0.075 mm (0.003 in.) maximum of 10 N (2.2 lb.) |
| Step Accuracy | ± 3 arc minutes ($\pm 0.05^\circ$) |